

C&C Studio was founded by Paolo Albertelli and Maria-
grazia Abbaldo in Turin in 1997.

After they had graduated in Architecture at Politecnico
di Torino, they achieved their formation in architecture,
restoration and sculpture studios.

From the very beginning their research have been
focusing both on architecture and sculpture.

Their architectural projects have received two important
awards: they won "Architetture rivelate" with a glass and
steel expansion of their house in San Martino in 2002;
they were second-prize winners of the competition for
Villa della Regina in Turin in 2008.

Thanks to their particular attention to the use of different
materials, a reflection on the relationship between
sculpture and water has been carried on: two fountains
were realised to be installed on Nichelino and Casale
Monferrato roundabouts; another fountain resampling
hockey on ice was realized for the Olympic Winter Games
that took place in Turin in 2006.

Afterwards the PROFILES project was born. They are
sculptures dedicated to the investigation of nature and
the relationship between earth and skies.

Experimentation and use of techniques such as laser cut
on CORTEN and INOX steel had got more intensive,
together with bronze casting and combinations of wood
and marble works.

The project consolidates the collaboration with artisans of
excellence and internationally renowned photographers,
and allows an intensive research and design work that
still sees the artists fully engaged.

C&C Studio sculptures have achieved international ack-
nowledgment and were showcased in many museums
and exhibitions in Italy, France and Switzerland.



BOSCO DEL LUPO

Profile, laser cut on inox steel and bassorilievo on wood • 1200 x 420 x 3 mm • 2015



BASTONE

Sculpture, bronze casting with differentiated coating • 1640 mm • 2011



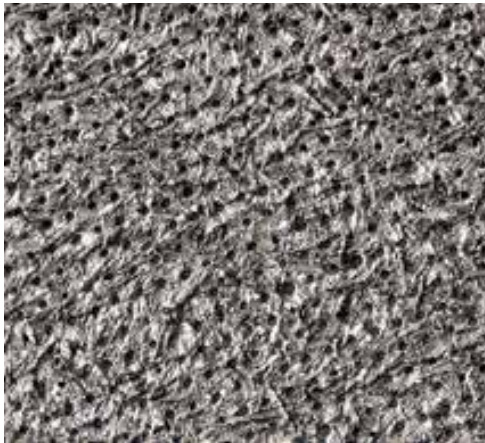
L'ALBERO E LA SUA IMPRONTA

Profile, laser cut on oxidised corten steel • 4000 x 3400 x 2 mm • 2015



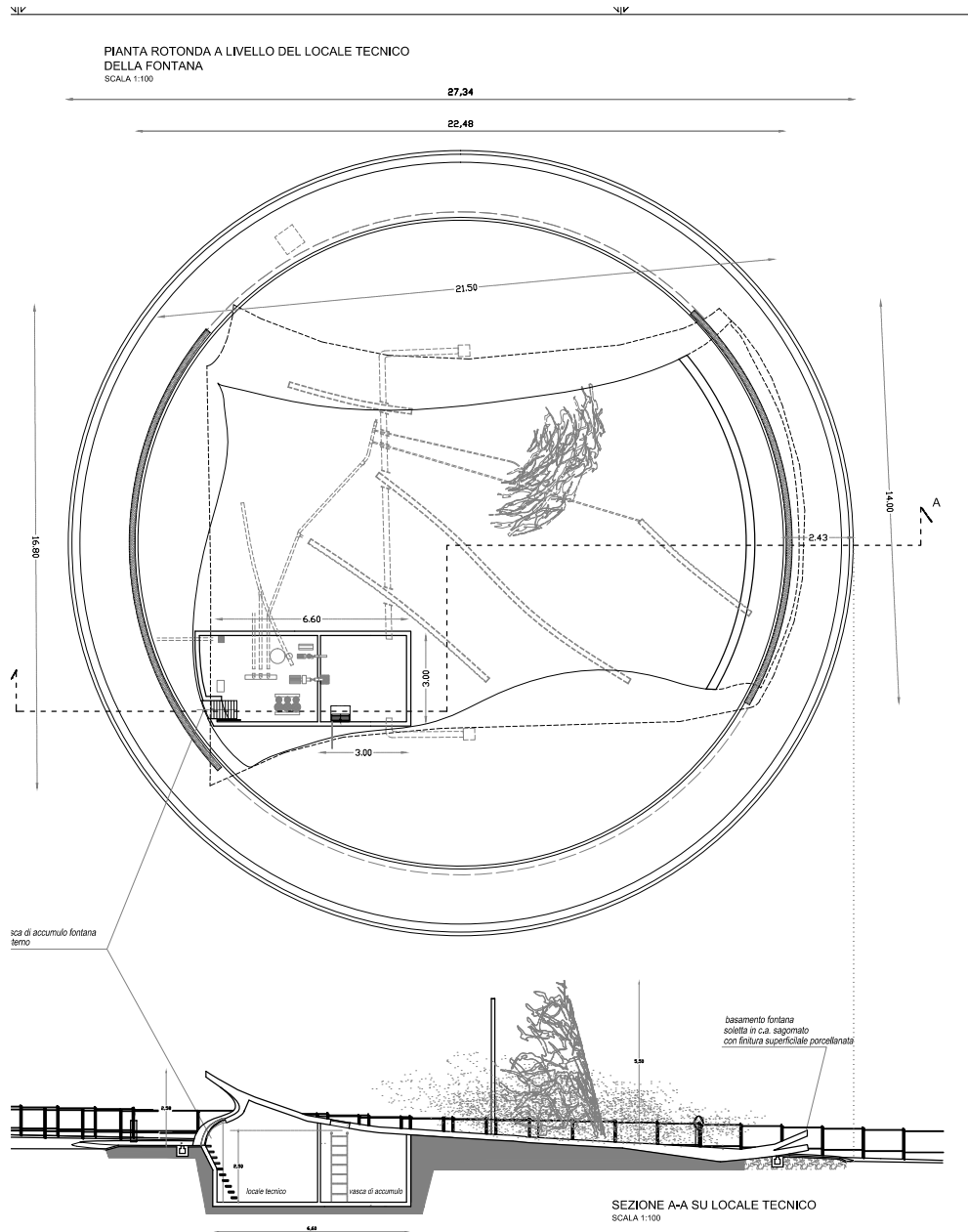






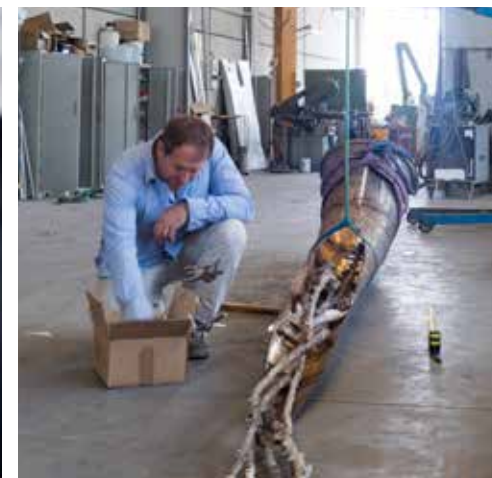
OBLIQUITY

Sculpture, laser cut on inox steel on a base of black Ormea marble • 350 x 426 x 2 mm • 2013



TEATRO D'ACQUA

Fountain, reinforced concrete and laser cut on inox steel • 16 x 22 m • 2006



ALPHORN

Sculpture, bronze casting and laser cut on inox and on corten steel • 600 x 55 cm • 2015



MARIAGRAZIA ABBALDO
PAOLO ALBERTELLI

ALESSANDRO MARCHIS • first assistant
SARA FENOIL • drawings coordinator
ANNAMARIA NIZI • drawings
BEATRICE MELONI • communication
NICOLA DELL'AQUILA • photography



