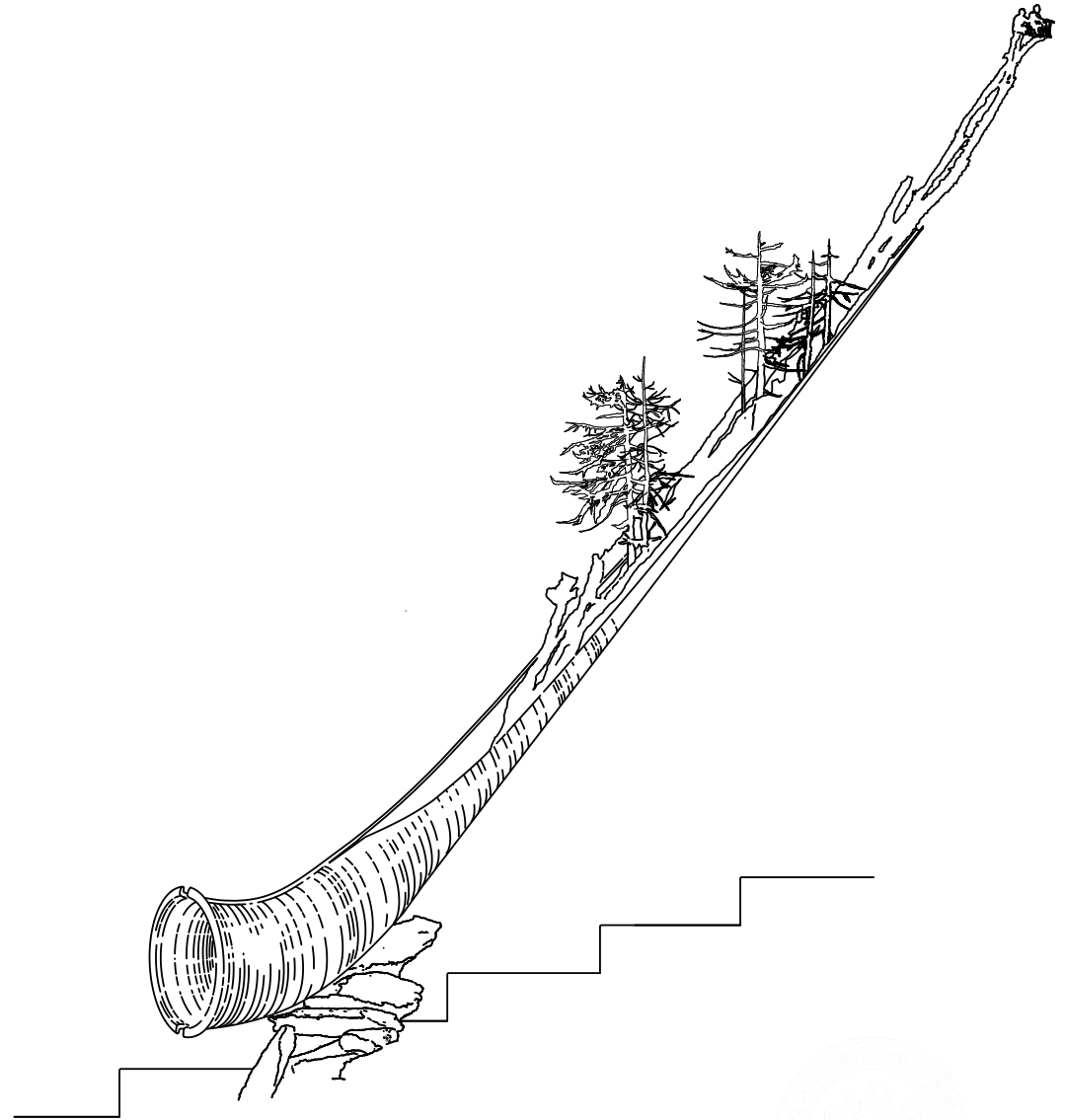


PAOLO ALBERTELLI • MARIAGRAZIA ABBALDO **ALPHORN**



“ALPHORN”

ALPHORN



ZERMATT 2015

A sculpture for the 150 Years of the First Ascent of the Matterhorn



PAOLO ALBERTELLI • MARIAGRAZIA ABBALDO

TORINO, ITALY

ALPHORN

A sculpture for the 150 Years of the First Ascent of the Matterhorn

Graphic design by Studio C&C

This volume was realized on the occasion of the construction of the Alphorn sculpture commissioned by the city of Zermatt in 2015 for the 150 Years First Ascent of the Matterhorn .

Acknowledgements

Municipality of Zermatt
Fonderia Artistica De Carli
MA-BO
Ciro Rispoli

Photo credits and graphics
Nicola Dell'Aquila

PREFACE

“Wir wurden gefragt, ein Skulptur zum Jubiläum der Matterhorn Erstbesteigung zu gestalten.

Das Alphorn, ein alt bekanntes und historisches Kommunikationsmittel hat uns darin inspiriert. Die Bronze Struktur, welches den typischen Holzteil darstellt, ist in zwei Teile aufgeteilt. Wir haben uns entschieden, Zweige aus Bronze und kleine menschliche Gestalten in das innere zu platzieren. Dies um die Verbundenheit zwischen Natur und Mensch zu betonen. Die aus rostfreiem Stahl geschnittenen Figuren präsentieren die Momente des Alpinismus, der Klettermomente hin zur Einkehr in die Landschaft.

Die wichtigste Figur repräsentiert die Matterhorn Erstbesteigung, geschaffen nach Zeichnungen von Edward Whymper.

Zwei Personen stehen an der Kante. Whymper und Carrel zusammen auf dem Gipfel vom Matterhorn, zehn Jahre nach der Erstbesteigung. Erzählt in dem Film „The Great Conquest“. Unser Wunsch ist es zu untermalen, dass bei einer Eroberung, Teilen wichtiger ist denn Wettbewerb.

Wir danken dem Nationalen Bergmuseum in Turin, und dem Schriftsteller Enrico Camanni, die uns bei der extensiven historischen Recherche geholfen haben.”

P. Albertelli und M. Abbaldo

“ We have been asked to create a sculpture to celebrate the first ascent of the Matterhorn.

The Alphorn, a well known historical communication tool, has strongly inspired us. The bronze structure, as the typical wooden one, is divided into two parts.

We decided to put cast bronze larches and tiny human shapes inside the sculpture to emphasize the interweave between nature and men. These stainless steel laser-cut human figures represent the topical moments for alpinists, from the climbing effort to the contemplation of the landscape.

The most important human shapes represent the ascent of the Matterhorn, according to the famous drawings by E. Whymper.

Two characters stand on the sculpture edge: Whymper and Carrel together on the summit of the Matterhorn ten years after the first conquest, as the movie “The Great conquest” tells. Our aim is to underline that sharing is more important than competing, in order to achieve a conquest.

We would like to thank the National Mountain Museum of Turin and the writer Enrico Camanni that have helped us to produce an extensive historical research.”

P. Albertelli and M. Abbaldo

WORKING WITH NATURE



The “Alphorn” shows larch branches created from bronze on which seven figures climb upwards. They are a reference the artist makes to the seven first ascenders, who were the first to stand atop the summit of the Matterhorn in 1865. The alphorn is installed on the stairs of the parish hall as part of the 150 Years First Ascent of the Matterhorn celebrations in July 2015.



ALPHORN

Sculpture, bronze casting and laser cut on inox and on corten steel • 55 x 600 cm • 2015





*The detail shows the laser cut on inox steel of a rope-party inserted on bronze branches
At the top Whympet and Carrell*



THE WORK IN THE FOUNDRY













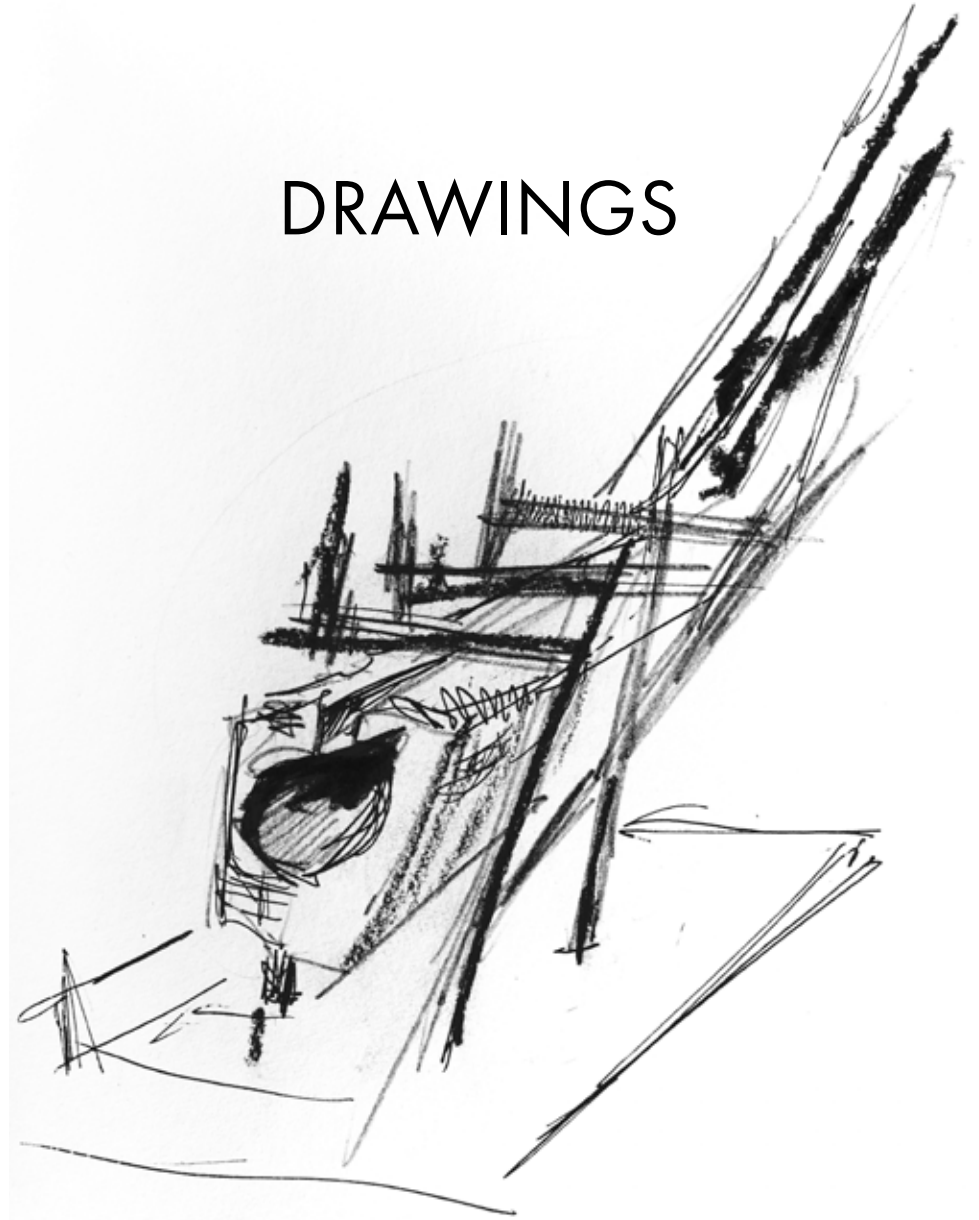


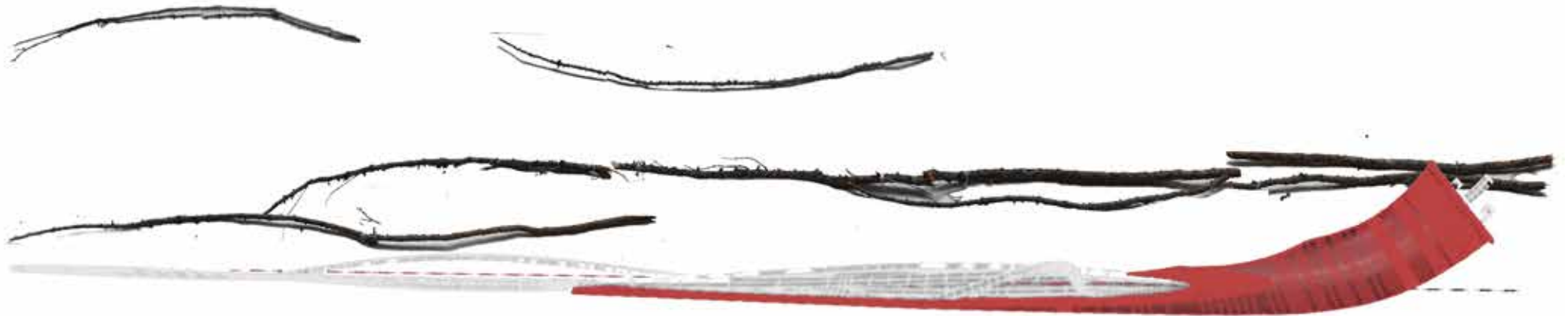
ZERMATT, IN THE KIRCHPLATZ



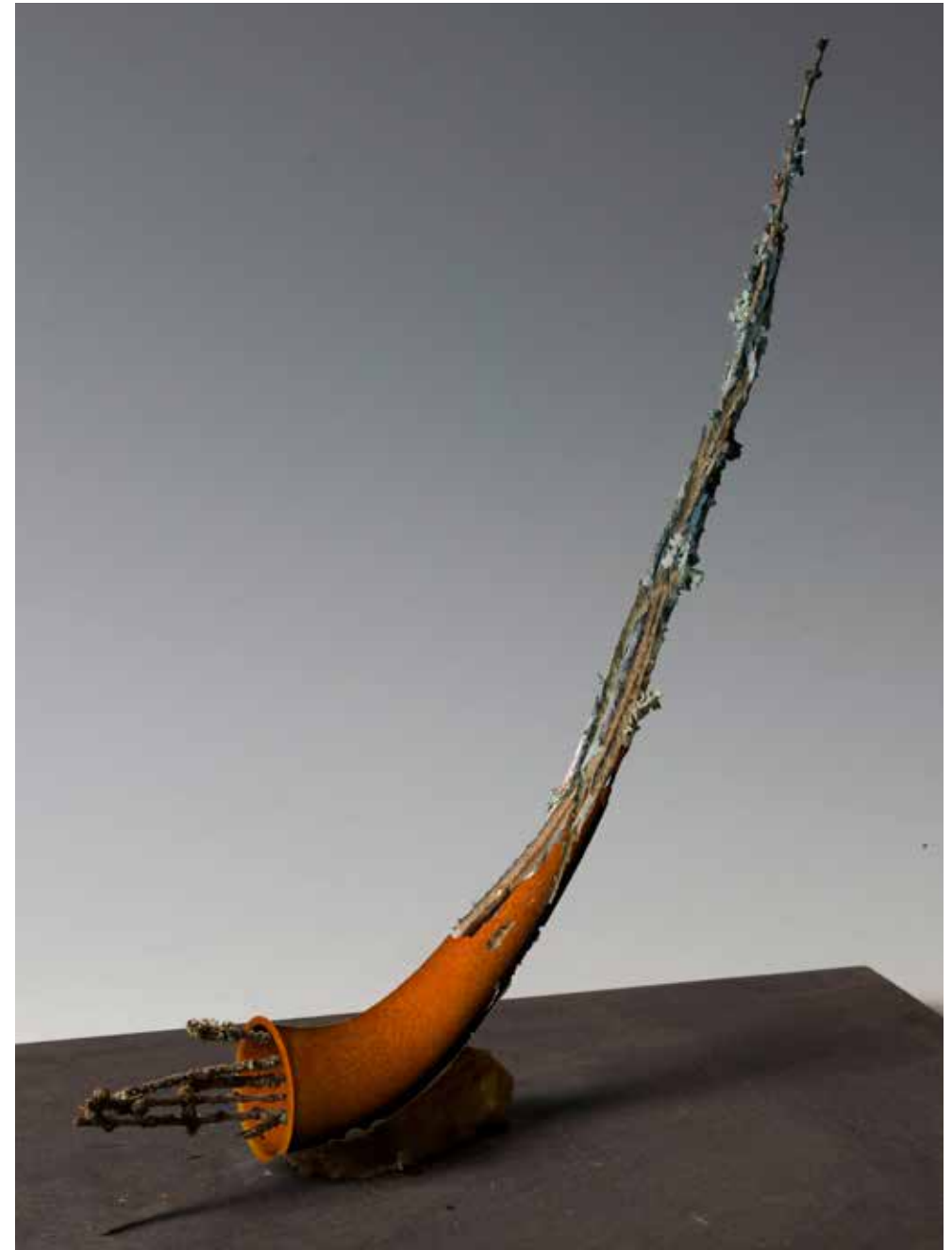
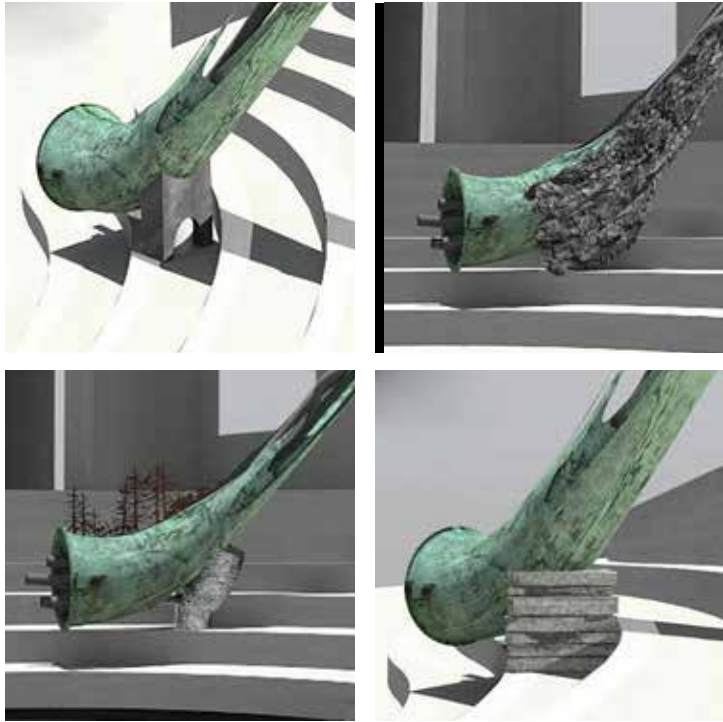


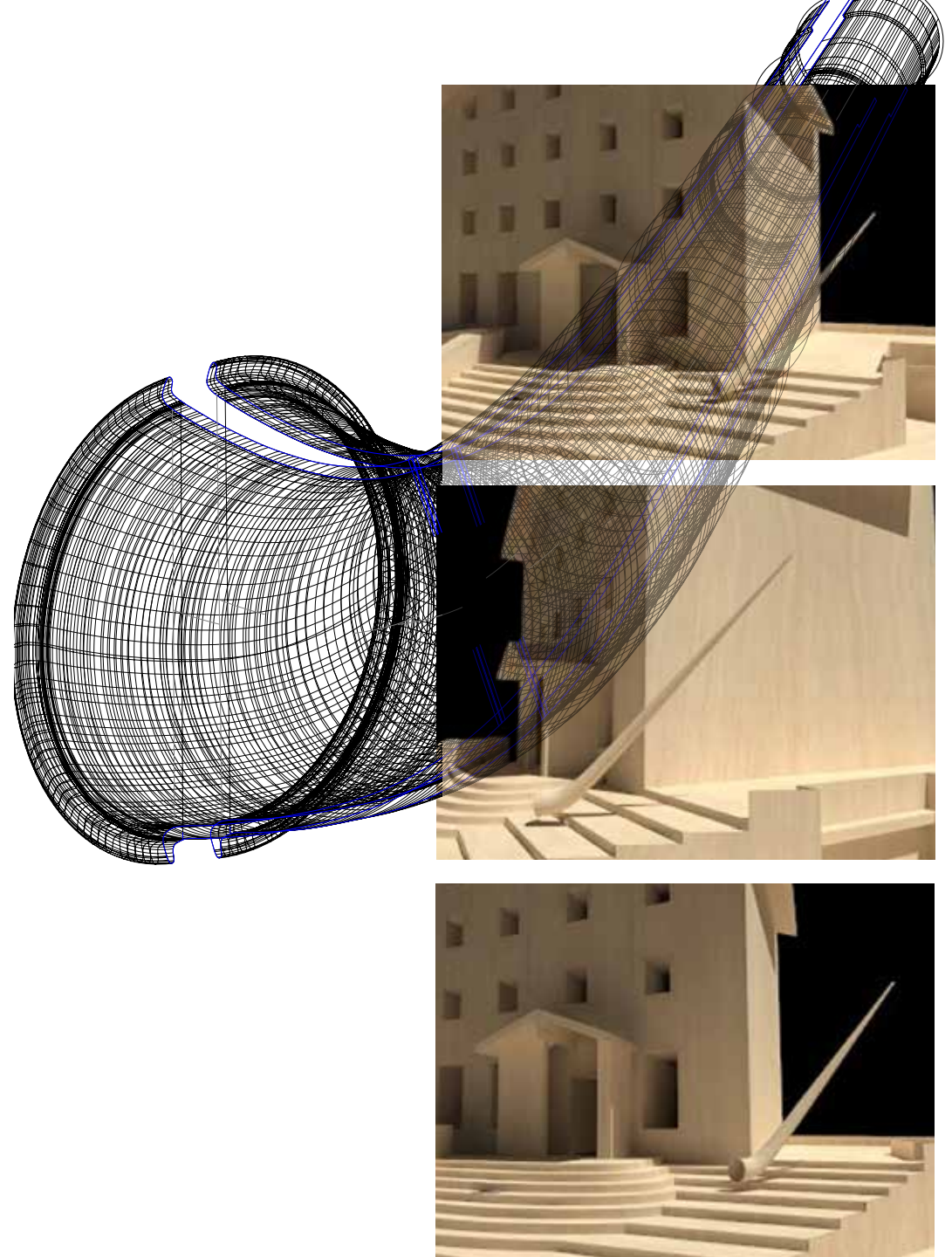
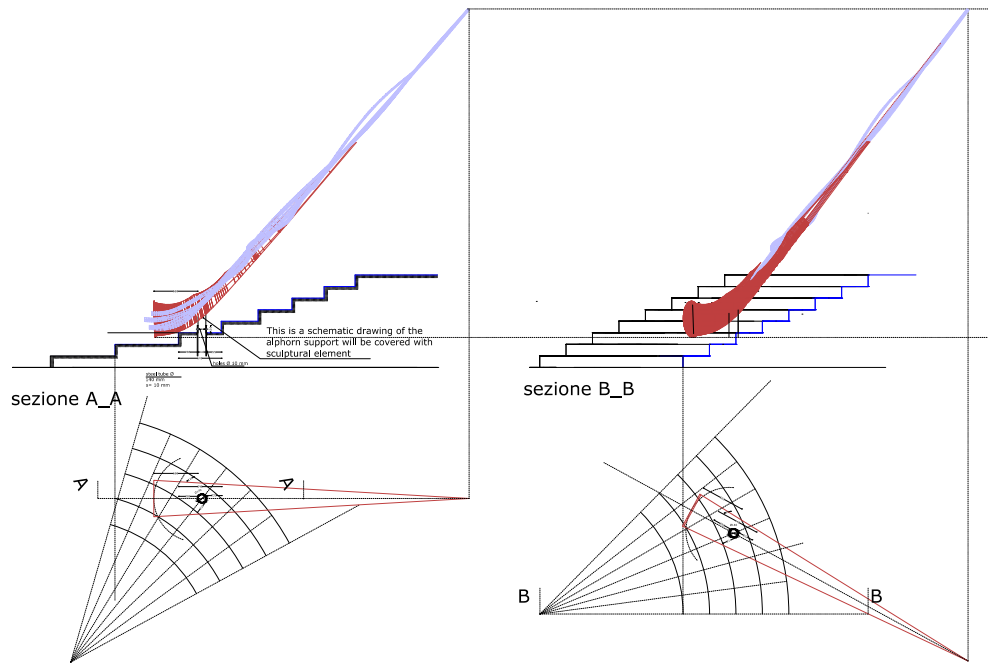
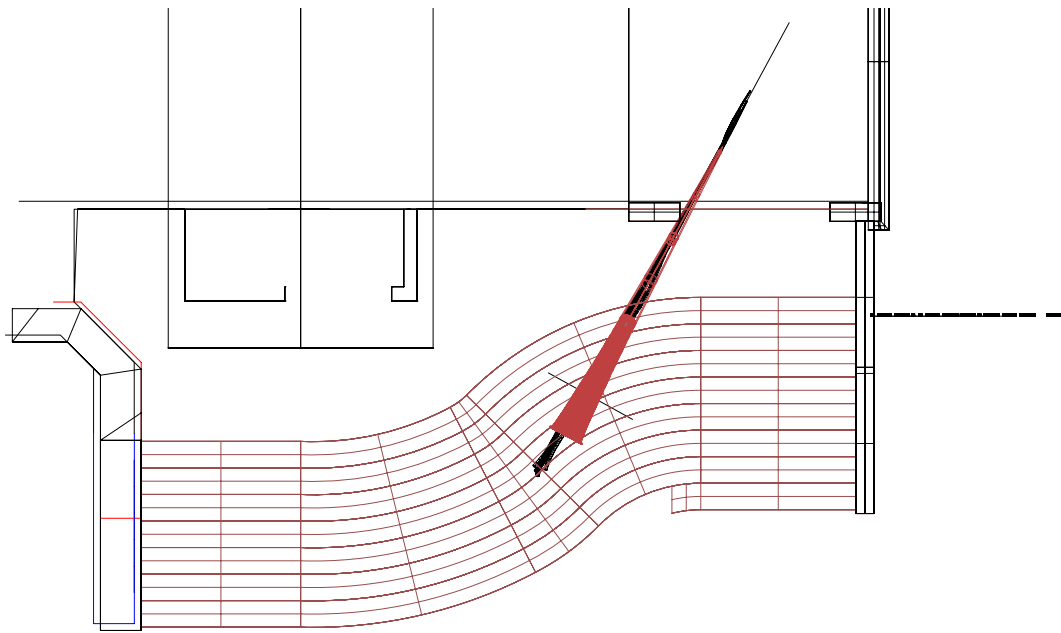
DRAWINGS







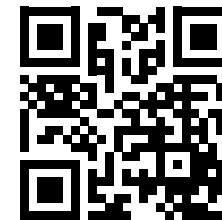






MARIAGRAZIA ABBALDO
PAOLO ALBERTELLI

ALESSANDRO MARCHIS • first assistant
SARA FENOIL • drawings' coordinator
CARLA ARDU • drawings
BEATRICE MELONI • communication
IRENE MINA • assistant
TONI SCARMUZZA • foreman
MARCO MUNNA • 3D construction
NICOLA DELL'AQUILA • photography



www.studiocec.it • info@fontanedoc.it
+393397374910

TORINO, ITALY